

## Smart Wireless Solutions



Austen Building Group (ABG) offers a next generation range of smart wireless sensors designed to support predictive maintenance, real-time monitoring, and operational efficiency across a wide range of sectors including healthcare, aged care, commercial, industrial, and government facilities.

These plug-and-play sensors are designed for rapid deployment, minimal infrastructure disruption, and instant data visibility through our secure online portal, accessible via desktop and smart devices.



# Features

## Sensors

- Sensor batteries last 4 to 9+ years
- Sensors hold 2000 to 4000 readings in memory if connection with gateway is lost
- Sensors have a wireless range of up to 365m non-line-of-sight
- Sensors can activate controllers to switch relays ON/OFF to perform tasks
- Sensors come with a technical specification data sheet
- Sensor calibration is achievable using the online portal and one other sensor

## Gateways

- Gateways have a battery backup
- Gateways hold 30,000+ sensor readings in memory if power is lost
- Gateways come with a technical specification data sheet

## Online Portal

- Online portal is accessible from any PC or smart device

## Training

- Online portal training is provided to all users free of charge
- Online portal super user training is available upon request [manage your own system]

## Support

- Ongoing online portal support is available

## Subscriptions

- Annual and quarterly subscriptions are available
  - Includes monitoring of installed devices [does not include cost of devices, installation, maintenance and replacement batteries]

## Security

- Sensor readings protected by Encrypt-RF® Security (Diffie-Hellman Key Exchange + AES-128 CBC)

## Savings

- ABG Smart Wireless Solutions replaces manual equipment checks and their associated costs

## Gateways



Cellular Gateway  
12.7 x 9.7 x 3.8cm



EGW4 Ethernet Gateway  
12.7 x 9.6 x 3.8 cm



Industrial Cellular Gateway  
14.8 x 9.0 x 5.5 cm

## Sensors



Accelerometer – Impact  
11.1 x 4.4 x 2.8 cm



Temperature with Probe  
11.1 x 6.3 x 2.8 cm



Infrared Motion Detection  
11.1 x 6.3 x 2.8 cm



Control [Relay]  
12.7 x 3.5 x 3.3 cm



Humidity  
11.1 x 6.3 x 2.8



Carbon Dioxide  
11.1 x 6.3 x 2.8cm



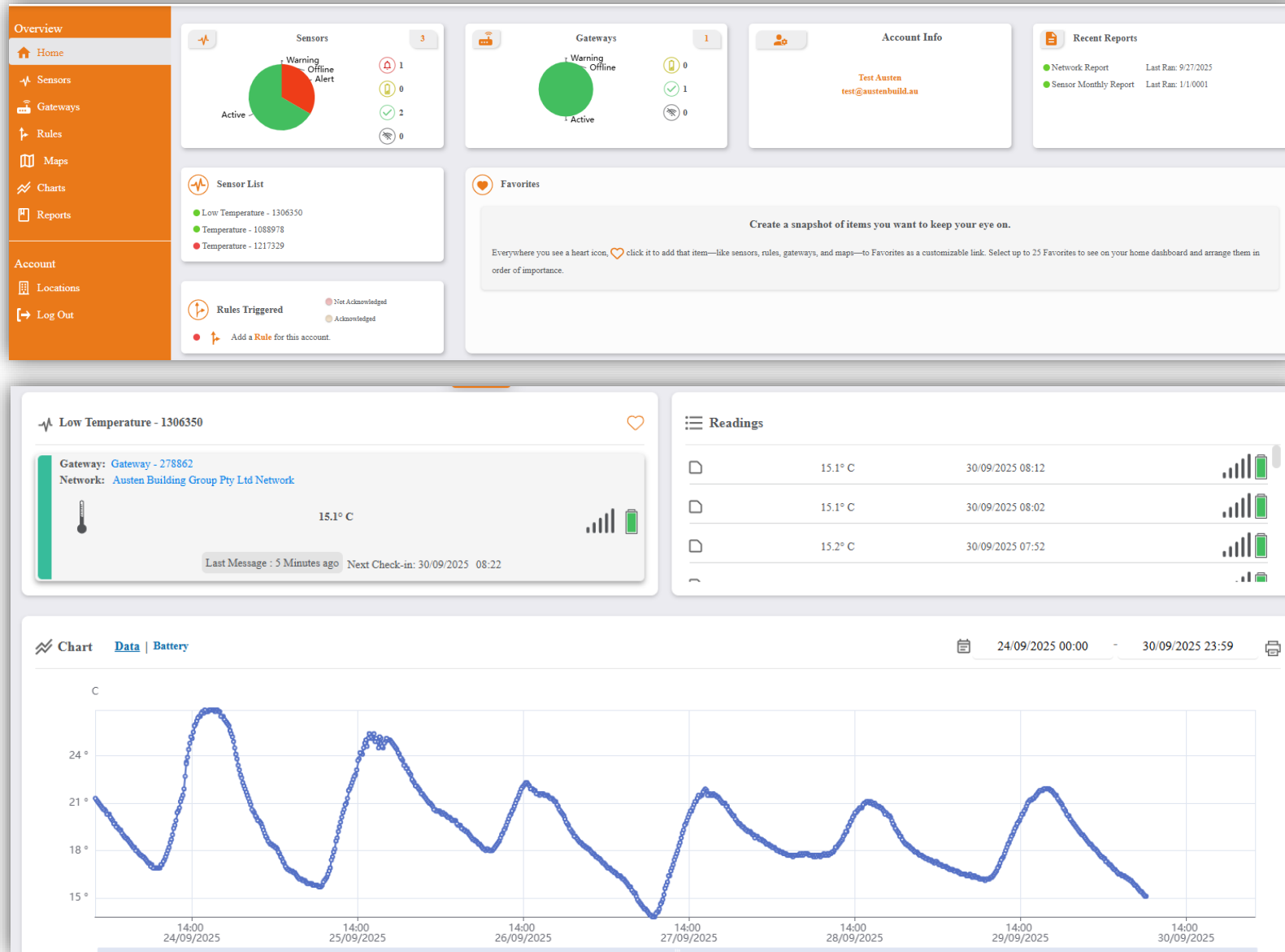
Water Detection Puck  
7.62 x 2.54 cm



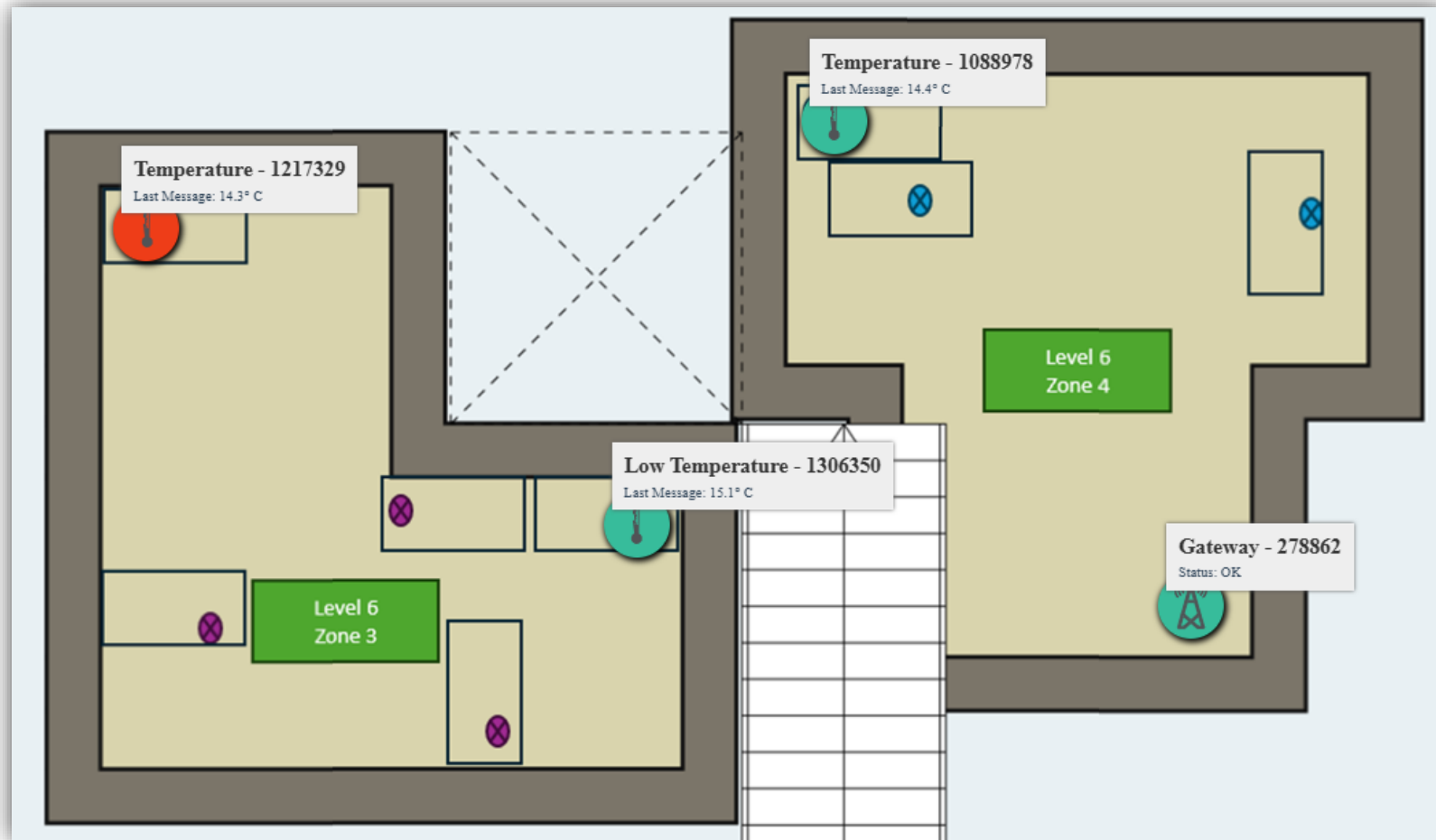
Votage  
11.1 x 6.3 x 2.8

*Note: above measurements do not include antennas, probes or leads*

# Online Portal Snapshot



## Example Floor Plan



# Sensor Categories and Applications

## HVAC System Monitoring

- **Sensors:** temperature, vibration, motor performance
- **Purpose:** detect system inefficiencies, filter blockages, overheating, or motor fatigue before they result in equipment failure
- **Benefit:** reduces downtime, extends HVAC life, optimizes energy use.

## Humidity & Mould Control

- **Sensors:** humidity
- **Purpose:** monitor internal humidity levels to detect conditions conducive to mould growth, especially in healthcare or closed spaces
- **Benefit:** early intervention, protects indoor air quality, reduces remediation costs.

## Electrical Fault Detection

- **Sensors:** voltage irregularity, thermal detection
- **Purpose:** identify surges, overloads, or abnormal heat signatures before circuit or switchboard failure
- **Benefit:** minimises fire risk, improves compliance, lowers repair costs

## Water Leak Detection

- **Sensors:** leak sensors, moisture intrusion
- **Purpose:** detect slow leaks or flooding in high-risk areas such as plant rooms, bathrooms, or rooftops
- **Benefit:** prevents structural damage, insurance claims, and costly repairs.

## Asset Movement / Vibration

- **Sensors:** motion / vibration
- **Purpose:** monitor critical equipment (e.g. pumps, chillers, motors, transportation) for unusual movement that may signal performance failure
- **Benefit:** enables predictive maintenance, reduces reactive callouts.

## Environmental Monitoring

- **Sensors:** CO2, ambient temperature, air quality
- **Purpose:** monitor indoor air quality for occupant
- **Benefit:** assists in meeting WELL, NABERS, and health standards.

## Cold Storage & Fridge Monitoring

- **Sensors:** temperature
- **Purpose:** ensure food, vaccines, or other sensitive items remain in safe storage conditions
- **Benefit:** reduces spoilage risk, supports compliance with storage regulations.





## Key Benefits

**Predictive maintenance:** identify issues before failure and schedule repairs proactively

**Cost savings:** reduce emergency callouts, avoid asset replacement, and lower insurance claims

**Data transparency:** real-time dashboard access from mobile / tablet / desktop

**Easy installation:** no invasive cabling or complex integrations required

**Compliance:** support for essential service reporting, environmental audits, and safety standards.



## Client Online Portal Access

Clients receive a secure login to their ABG online portal, enabling live tracking, downloadable reports, and automated alerts. Our system also includes push notifications for proactive management.

## Why Choose ABG for Wireless Sensors?

- ISO certified for quality, safety, and environment service delivery
- National coverage with technician access across all states
- Seamless integration with your existing facility maintenance contracts
- Dedicated support team and onboarding walkthroughs
- Flexible deployment models – individual sites or national portfolios.

## Austen Building Group Pty Ltd

### Head Office

Level 6, 110 Mary Street  
 Brisbane QLD 4000

### Contact Information

P: 1300 206 141

E: [john.daly@austenbuild.au](mailto:john.daly@austenbuild.au)

### Company Information

ABN 97 150 172 106

[austenbuild.au](http://austenbuild.au)

